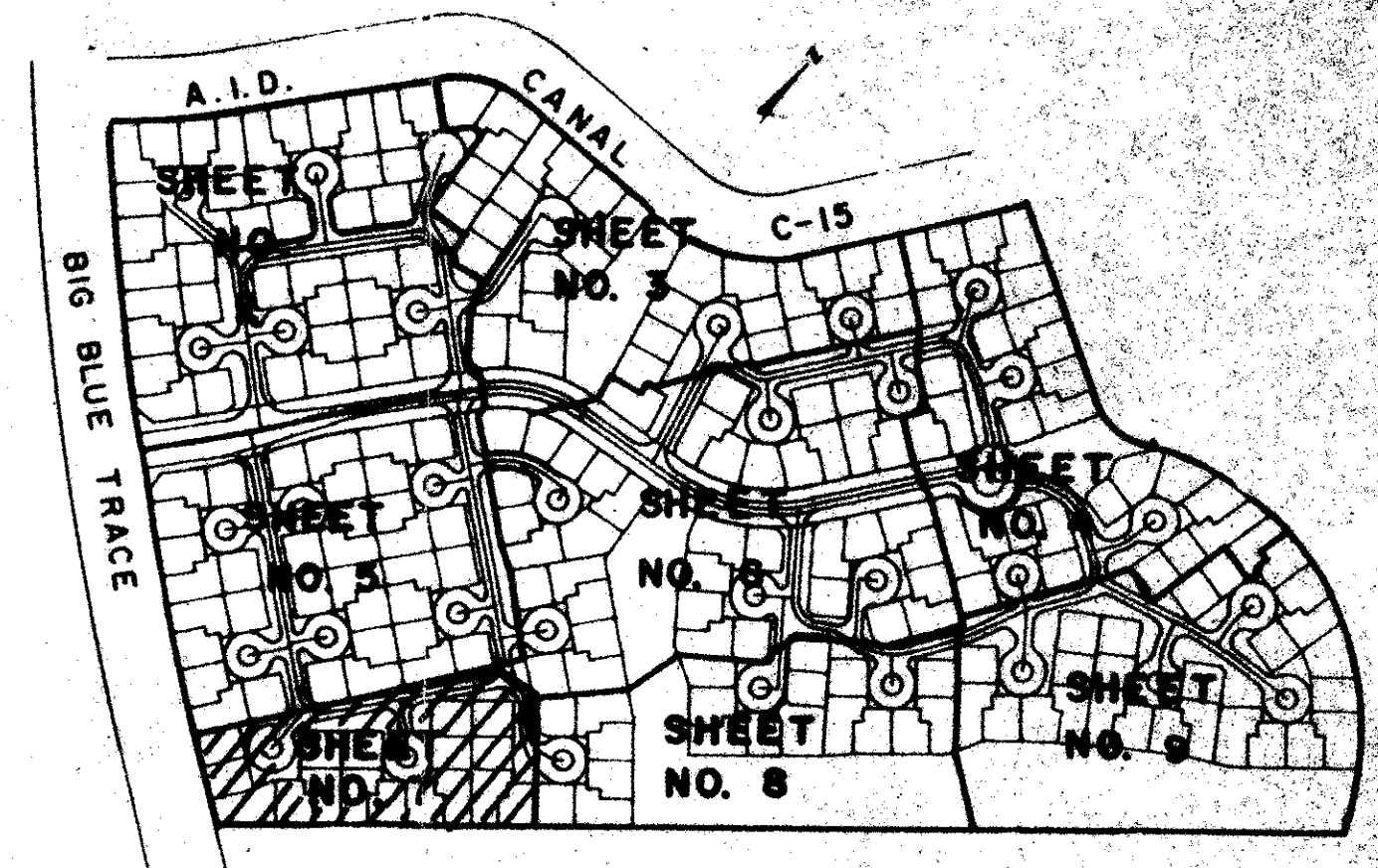
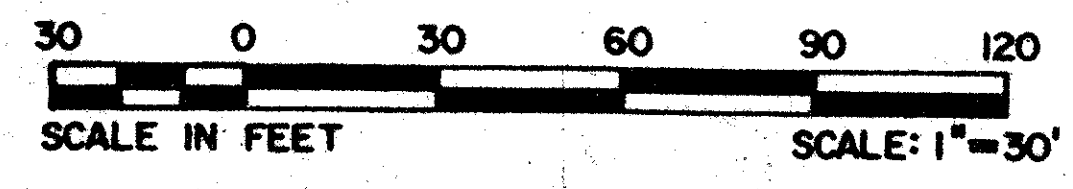


DRAWING NUMBER
54/64

TRACT 42 - B OF WELLINGTON P.U.D.

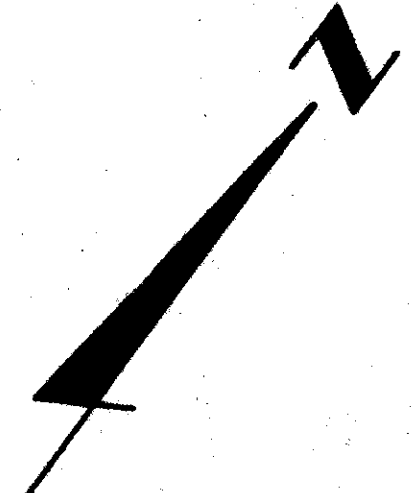
IN PART OF SECTION 10, TOWNSHIP 44 SOUTH, RANGE 41 EAST
PALM BEACH COUNTY, FLORIDA
IN NINE SHEETS SHEET NO. 7

GEE & JENSON
ENGINEERS - ARCHITECTS - PLANNERS, INC.
WEST PALM BEACH, FLORIDA
JANUARY 1986

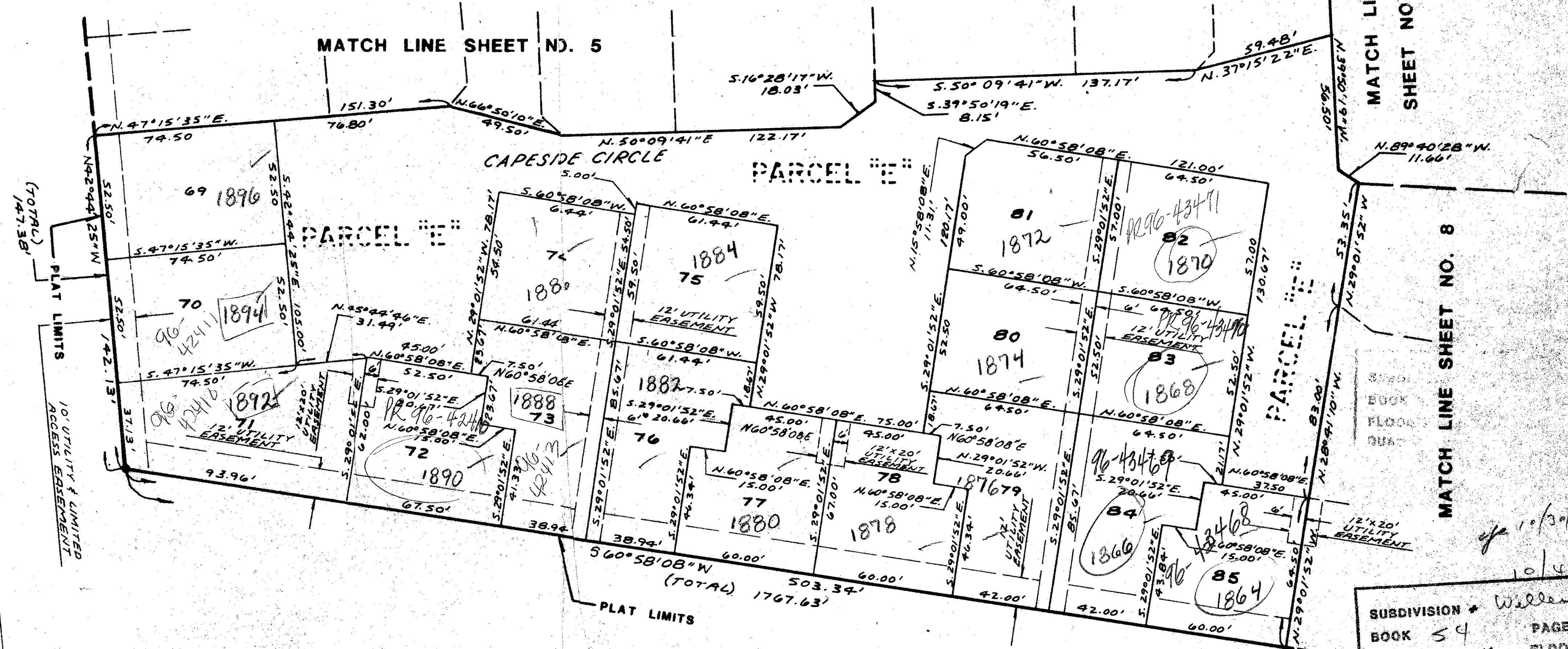


STATE OF FLORIDA
COUNTY OF PALM BEACH
This plat was filed for
record at _____ M. this _____ day
of _____ 1986, and duly
recorded in Plat Book No. _____
on Pages _____ thru _____
JOHN B. DUNKLE
Clerk Circuit Court
By: _____ D.C.

64



GREENVIEW SHORES NO. 2
OF WELLINGTON P.U.D.
PB. 42 PGS. 172-174
INCLUSIVE



SUBDIVISION * Wellington
BOOK 54 PAGE 64
FLOOD ZONE B FLOOD MAP * 100B
QUAD 6 ZONING
SE ZIP CODE 33414
PUD NAME Tract 42-B

THE SHORES AT
WELLINGTON - P.U.D.
PB. 42, PGS. 172-174 INCLUSIVE

0332-063

ADD. BY [Signature]
CHECKED BY [Signature]

54/64

TRACT 42-B OF WELLINGTON P.U.D.